

SUPPORT



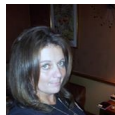
We need your support to help us to provide the much needed specialist equipment and activities for the children and young people with disabilities or life limiting illnesses.

Thank you to all our donors for your kind generosity. Enquiries are always welcome from any organisation or individual who would like to support our charity or anyone who feels that their child may benefit from our services.

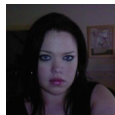
Katie Holt
Trustee



Sharon Sargent
Trustee



Lindsey Aldred
Fundraising Officer



Sally Hart
Fundraising Officer



www.blessingsindisguise.co.uk

"Santa in July" Nominations are open for those children who may have been seriously ill or battling a life-limiting illness over the last Christmas or for those who enjoying the next Christmas may not be an option. Please email blessingsindisguisecharity@gmail.com



Applications open all year round for disability equipment or to register.

See our website for information.
www.blessingsindisguise.co.uk

Blessingsindisguisecharity@gmail.com
01942 316113

Lilford House
St. Helens Road
Leigh
WN7 4HG



giftaid it
Make your gift go further at no expense to you!

"Creating positive changes to improve life's misfortunes, everyone deserves a Blessing in Disguise"



hello
JULY

July
2024



Company Reg. No: 8790053
Member of SFEDI & IOEE



Everyone deserves a Blessing in Disguise....

Blessing in Disguise Children's Charity is a not-for-profit organisation that enriches the lives of disadvantaged children and young people throughout the UK.

Blessing in Disguise creates a positive focus on enabling freedom to enjoy treasured memories to share with family and loved ones and provides a range of life enhancing experiences helping to improve the quality of life for children and young people with disabilities or life limiting illnesses.



*Blessing
In Disguise*

We are a socially responsible organisation, providing much needed support to many children, young adults & their families / carers by providing, free of charge, a range of life enhancing equipment, activities and social/ recreational opportunities for the whole family. Through personal experience, we know that it can often be difficult on other family members, who perhaps unfortunately miss out, but we will endeavour to encourage them to achieve positive changes. With the right funding we have the potential to increase the number of vulnerable people that we support each year, providing much needed equipment to more families across the UK and making a significant difference.

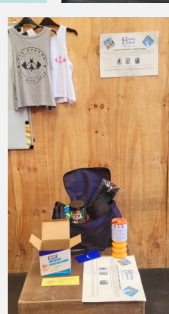
What we do...

We fundraise all year round to provide much needed support to children & young people, their families/carers by:

- Providing FREE specialist equipment
- Organising VIP Exclusive & Inclusive events & fun activities
- Working in partnership with other community groups & charities
- Creating treasured memories
- Promote social inclusion by hosting networking coffee mornings

WINGING IT FOR B.I.D

Unfortunately, Katie's Wing-Walk had to be postponed due to bad weather conditions. However, it has been rescheduled for September 1st. Despite this, the fundraisers at CFUF and The Farm with Betti still managed to raise £750 with more due.



Blessing in Disguise would like to extend our heartfelt thanks to Reese for his efforts in fundraising and purchasing 2, two-year Wigan Warriors season tickets for our service users. One of which is for a wheelchair user.



Also a big thank you to Anthony from The Millstone Golborne for organizing the bonus ball raffles.

"Santa in July" is just around the corner. For children who may have been seriously ill or facing a life-limiting illness over the last Christmas, or for those who may not be able to enjoy the next Christmas, this event offers a beacon of hope. Last year's feedback highlighted the profound impact it can have: "Thank you all for such a lovely day! We had a wonderful time and made more special memories to treasure."



With your kind support, Blessing in Disguise has provided the following equipment/services:

Mobility and walking aids, special needs wheelchairs, buggies & accessories; high chairs, low chairs, posture seating; communication aids and adaptations, monitoring equipment; specialist beds & bedding; safety equipment; Lock-down activity and support packs; social links & networking during lock-down; various home equipment, furniture; Christmas grotto, Easter eggs & toys; dark dens & sensory equipment; communication ICE badges, lanyard and wristbands; disabled swim therapy sessions; family respite breaks & family days out; specially adapted fun fair and exclusive access for disabled children.. plus much, much more...